

SR **Nexco**<sup>®</sup>

The light-curing lab composite

Lifelike  
appearance –  
made easy



**ivoclar**  
**vivadent**<sup>®</sup>  
passion vision innovation

# There are lab composites for everybody.

## SR Nexco® is for you.

Modern lab composites offer outstanding material and processing properties, a beautiful optical appearance and good clinical behaviour. Composites are force-absorbing as compared with ceramic materials, and this has a positive influence on the chewing behaviour. Such materials are ideal for the veneering of implant-supported restorations.

SR Nexco® combines these properties into a pure light-cured lab composite with micro-opal fillers. In addition, SR Nexco offers:

- Lifelike appearance
- Layer thickness tolerance
- Flexible choice of equipment

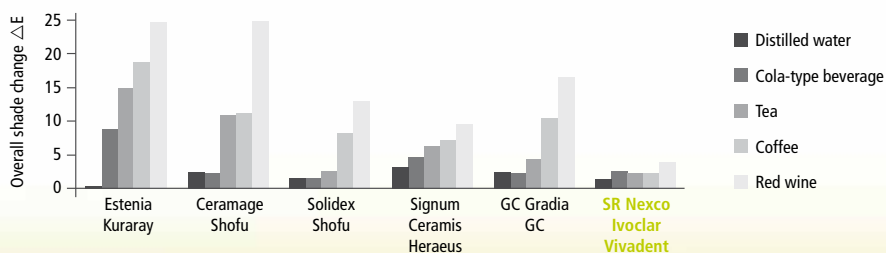
### Materials science

SR Nexco features an optimum balance between the individual physical properties. The resulting material attributes – wear resistance and shade stability, for instance – speak for themselves. SR Nexco offers the individuality you desire and addresses today's day-to-day challenges in the dental lab.

Flexural strength (MPa)	Modulus of elasticity (MPa)	Vickers hardness (MPa)	Water absorption ( $\mu\text{g}/\text{mm}^3$ )	Water solubility ( $\mu\text{g}/\text{mm}^3$ )
90 ± 10	6500 ± 500	440 ± 5	15 ± 1	1 ± 0.5

Source: R&D, Schaan, 2011

### Shade stability testing after five-week storage



Source: Nippon Dental University School of Life Dentistry in Tokyo (Dr Shinya), 2012

# Lifelike appearance:

## Esthetics made easy

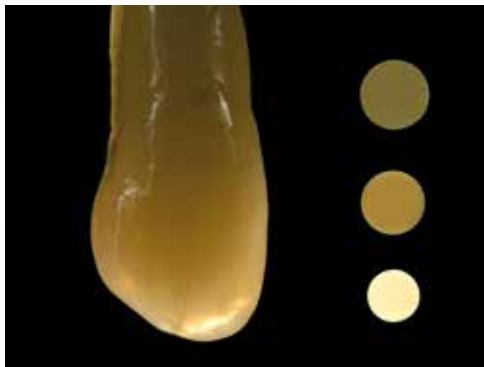


### SR Nexco is engineered to meet today's esthetic requirements

The micro-opal fillers provide for optical and esthetic properties modelled after natural teeth.

Given the high content of inorganic micro-opal fillers in the nanometer range, the material composition of SR Nexco enables a lifelike opalescent and fluorescent effect. Thus, a harmonious shade match can be easily achieved in any light conditions and restorations.

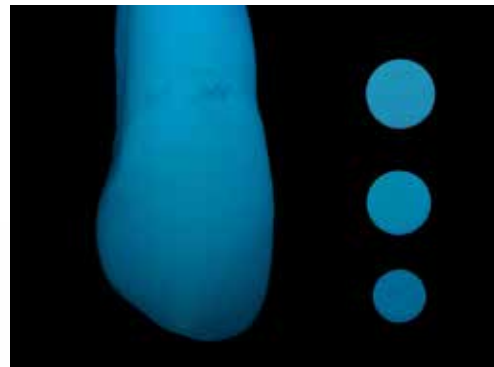
### Comparison of different SR Nexco components with a natural tooth



Pictures: Volker Brosch, Germany

The optical properties look their best in transmitted light: SR Nexco's opalescence and translucency are the same as the dynamic light effects in natural teeth.

All SR Nexco components – from the cervical to the dentin and the incisal – show the same behaviour as their respective counterparts in natural teeth.



The image taken with incident light shows the fluorescence and luminosity of SR Nexco. Natural teeth derive a major part of their brightness effect from their fluorescence.

This fluorescence plays an important role in the true-to-nature light behaviour of SR Nexco restorations.

# Layer thickness tolerance:

## Easy and quick shade reproduction

### Fabricating a veneer has never been so easy and fast

SR Nexco has been developed to enable you to achieve a consistent shade particularly in the case of varying layer thicknesses. No matter how much space is available, a precise shade match is never an issue.

The SR Nexco shades (A–D shade guide) are primarily the result of the combination of Opaquer and Dentin material. They have been specifically designed to match the shades of SR Phonares® II denture teeth.

This layer thickness tolerance is useful in any type of restorative work, because you can easily and comfortably design restorations which harmoniously blend into the surrounding structure. As a result, dental-lab procedures are less time-consuming and easier.

### Exact shade reproduction in various spatial situations

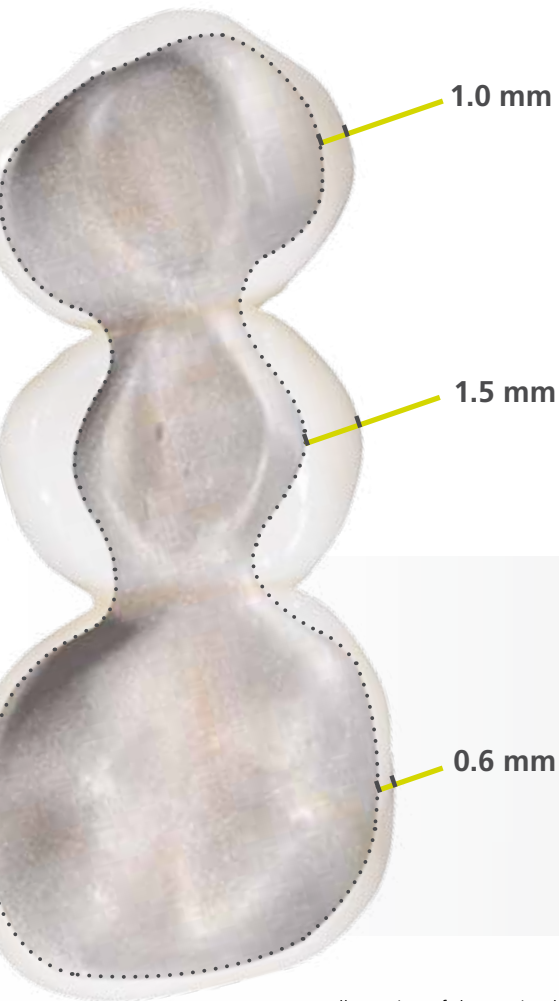


Illustration of the varying layer thicknesses in a bridge.



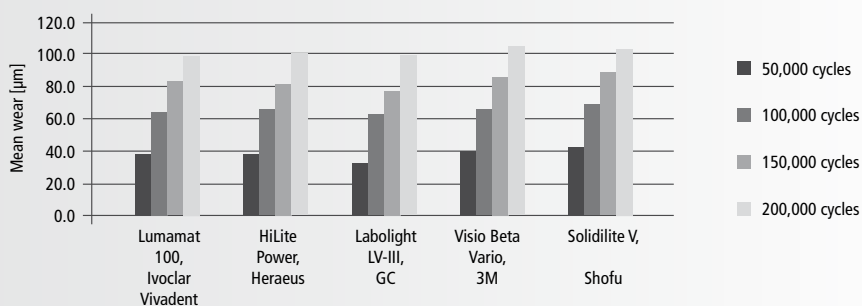
# Flexible choice of equipment: Polymerization as usual

## No investment, no familiarization – equipment flexibility

Everything stays the same if you use the purely light-curing SR Nexco – at least when it comes to polymerization. No investment in equipment is necessary, no familiarization required. SR Nexco can be thoroughly and reliably cured in many customary curing devices. During this process, the material develops the desired physical properties and a homogeneous surface. As a result, restorations show a lasting shade stability and a durable gloss over the entire wear period.

The wear test and the gloss stability in the tooth brushing test confirm that restorations are thoroughly cured in different curing devices.

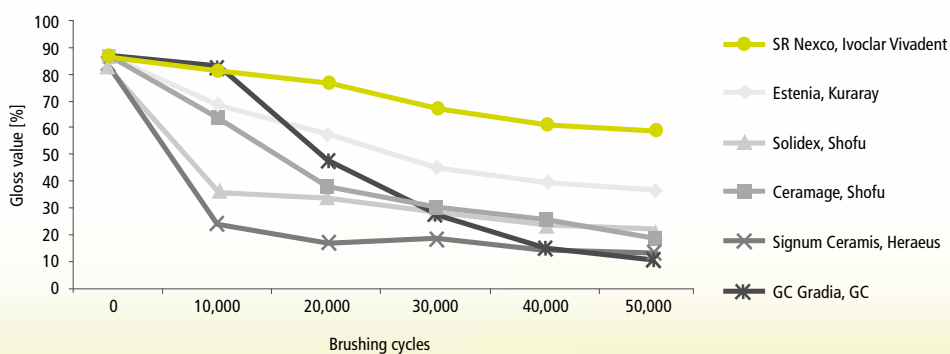
## Wear testing of SR Nexco



Wear resistance of SR Nexco according to the ACTA method in approved polymerization units.

Source: Polyclinic for dental prosthetics, Dr Martin Rosentritt, Regensburg, 2011

## Gloss stability



Significantly higher gloss stability of SR Nexco specimens after tooth brushing.

Source: Nippon Dental University School of Life Dentistry in Tokyo (Dr Shinya), 2012

# Versatile applications: **An all-rounder**

SR Nexco offers you numerous possibilities and increases your flexibility in the daily dental-lab work.

## Framework-free indications

- Inlays/onlays/veneers
- Anterior crowns

By combining Liner and Dentin materials, you can achieve a harmonious shade transition between restorations and natural tooth structure in framework-free restorations. As various Liners are available, you can adjust the shade even in the case of discoloured or devitalized teeth.



Framework-free SR Nexco restoration  
Pictures: Róbert Zubák, Slovakia

## Framework-based indications

- Crowns
- Bridges
- Combination dentures

In framework-based restorations, the foundation for a durable, esthetic dental restoration is already laid with the coordinated alloys. As an experienced manufacturer of dental alloys, Ivoclar Vivadent offers a comprehensive range of alloys – from high-gold to base metal.

SR Link, an easy-to-use and proven bonding agent, serves to establish an optimum bond between the framework and SR Nexco.



Implant-supported SR Nexco restoration with artificial gingiva.  
Picture: Thorsten Michel, Germany



# Versatile options:

## SR Nexco® shows its strength

SR Nexco's comprehensive shade range shows its full potential when it comes to artificial gingiva, particularly in implant-supported restorations.

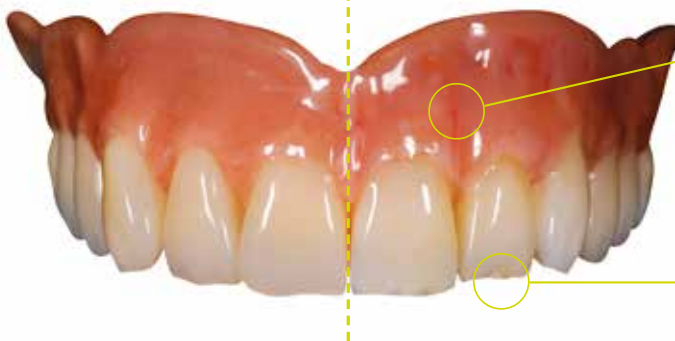
The perfect shade of the artificial gingiva can be created, as the red-opaque basic shade of the Ivobase® denture base material and the new Basic Gingiva 34 are identical. Using additional Intensive Gingiva and Gingiva materials, you can specifically design an artificial gingiva with a lifelike shade appearance.

The SR Connect bonding agent is the key to combining the different components. This light-curing bonding agent therefore opens up a wide range of applications. Thus, you can modify or characterize SR Phonares II denture teeth with SR Nexco.



Without characterization

With characterization



Characterization with SR Nexco  
Gingiva components



Characterization of  
SR Phonares II

Picture: Hans Jürgen Joit, Germany

### And saving the best for last ...

With SR Nexco, you can apply and polymerize adjustments to the artificial gingiva and veneer intraorally.

### A perfect combination

SR Nexco affords you numerous application possibilities, for instance in conjunction with the coordinated alloys, the SR Phonares II denture teeth and the Ivobase denture base material.

SR Nexco forms part of a comprehensive prosthetic solution from Ivoclar Vivadent. This concept allows you to combine materials from different product groups with each other.





## Fixed Prosthetics

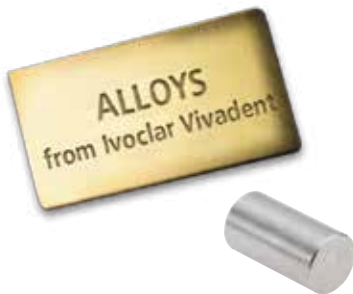
SR Nexco® forms a part of the “Fixed Prosthetics” product category. The products of this category cover the procedure involved in the fabrication of fixed prosthetic restorations – from temporization to restoration care. The products are optimally coordinated with each other and enable successful processing and application.



### THESE ARE FURTHER PRODUCTS OF THIS CATEGORY:

## Alloys

An alloy selection like no other



Performance, quality, trust

- Broad range of alloys adjusted to the requirements of modern dentistry
- Ideally coordinated with ceramic and composite veneering materials
- More than 100 years of experience in dental alloys

## Multilink® Automix

The adhesive cementation system



A strong bond, proven performance

- Strong hold – both dual and self-curing
- Universal – suitable for silicate and oxide ceramics as well as metal
- Clinically proven – numerous long-term studies

Would you like to know more about the products of the “Fixed Prosthetics” category? Simply get in touch with your contact person at Ivoclar Vivadent or visit [www.ivoclarvivadent.com](http://www.ivoclarvivadent.com) for more information.

Ivoclar Vivadent AG  
 Bendererstr. 2  
 9494 Schaan  
 Liechtenstein  
 Tel. +423 / 235 35 35  
 Fax +423 / 235 33 60  
[www.ivoclarvivadent.com](http://www.ivoclarvivadent.com)

Descriptions and data constitute no warranty of attributes.  
 © Ivoclar Vivadent AG, Schaan / Liechtenstein  
 644303/en/2013-02-13

**ivoclar**  
**vivadent**  
 passion vision innovation